





## ABOUT US

CBG Engineering stands as a trusted name in premium glass and aluminum fabrication, delivering innovative architectural solutions with precision and reliability. Equipped with advanced facilities and a highly skilled technical team, we provide complete services—from design and fabrication to installation and after-sales support. Our expertise spans curtain walls, sliding doors, ACP cladding, structural glazing, glass railings, skylights, and customized aluminum systems. Upholding the highest standards of quality, safety, and sustainability, CBG Engineering continues to set new benchmarks in modern construction and architectural excellence.



## SHANTA ATLIER

A signature project showcasing premium Aluminium Fixed Work, Louvers, Soffit Systems, Euro Model Glass, Bi-Folding Doors, and Glass Solutions, crafted to elevate modern architecture.

## OUR PROJECTS



## SHANTA CHELESTIAL

Premium facade works designed to elevate architectural identity through precision craftsmanship, contemporary design, and lasting performance.



## SHANTA BANSARI

Premium façade works delivering modern aesthetics, superior quality, and long-lasting performance

## OUR PROJECTS



## SHANTA AVIRA

Premium façade works executed with precision engineering, modern design, and lasting durability—creating a seamless blend of aesthetics and functionality.



## SHANTA SHWAPNONEER

A signature project showcasing premium curtain wall, glazing, curved glass, skylight, and architectural aluminum solutions, executed with precision engineering and modern design excellence.



## OUR PROJECTS



## ABC LEADS TOWER

Premium Curtain Wall Works executed with precision engineering, contemporary design, and superior craftsmanship, creating a modern and visually striking façade.

# OUR PROJECTS



## SHANTA MAYA

A signature project featuring premium façade works by CBG Engineering, delivering a seamless blend of architectural elegance, durability, and modern design.



## SHANTA MAGNOLIA

Premium entrance glass, soffit, and glass railing works executed with precision craftsmanship, enhancing the project's elegance, functionality, and architectural appeal.



## ASSEMBLE ARCHITECT

Premium Semi-Unitized Curtain Wall Glazing executed with precision engineering and contemporary design, creating a sophisticated and high-performance building façade.



## OUR PROJECTS



## ABC LTD

Premium Stick System Curtain Wall and Glazing Works executed with precision craftsmanship, creating a sleek, modern façade that enhances both aesthetics and functionality.I.



## EDISON FOOT WARE

Combination of spider curtain wall and stick system curtain wall glazing, featuring structural glass fittings with aluminum framing, delivering a modern transparent façade, maximum daylight, and strong weather-resistant performance.



## OUR PROJECTS



## THE ARADDHO

Spider curtain wall glazing system with structural glass fittings, delivering a sleek frameless façade, high transparency, modern architectural appeal, and durable weather-resistant performance.



## GULSHAN CENTER POINT

Semi-unitized curtain wall system with aluminum framing and high-performance glass glazing, delivering a modern architectural façade, improved daylight access, and durable weather-resistant performance.



## OUR PROJECTS



## CHALLENGER TOWER

Semi-unitized curtain wall system with aluminum framing and high-performance glass glazing, delivering a modern façade, natural daylight integration, and durable weather and structural performance.



## BRAC UNIVERSITY

Stick system curtain wall glazing with aluminum framing and high-performance glass panels, designed to ensure natural daylight, energy efficiency, and a modern, durable architectural façade.



## OUR PROJECTS



## THE CONOPUS

Aluminum sliding system with high-quality extruded profiles and smooth-operating glass panels, ensuring modern aesthetics, easy functionality, natural light, and durable weather-resistant performance.



## GULSHAN CENTER POINT

Semi-unitized curtain wall system with aluminum framing and high-performance glass glazing, delivering a modern architectural façade, improved daylight access, and durable weather-resistant performance.



## OUR PROJECTS



## CHALLENGER TOWER

Semi-unitized curtain wall system with aluminum framing and high-performance glass glazing, delivering a modern façade, natural daylight integration, and durable weather and structural performance.

# SHANTA OLYMPUS

High-performance unitized curtain wall system with double-glazed Low-E glass, delivering panoramic views, energy efficiency, and a sleek modern glass façade.



OUR PROJECTS

# THE PALACE LUXURY RESORT

Stick system curtain wall glazing with high-performance aluminum framing and glass panels, delivering a modern transparent façade, enhanced durability, natural light integration, and weather-resistant exterior performance.



OUR PROJECTS

# BGMEA UNIVERSITY OF FASHION & TECHNOLOGY

Semi-unitized curtain wall glazing system with aluminum framing and high-performance glass panels, designed for a modern architectural façade, improved daylight access, and durable weather-resistant performance.



OUR PROJECTS

# BRAC CDM

Spider curtain wall and stick system glazing with structural glass fittings and aluminum framing, delivering a modern transparent façade, enhanced daylight integration, and durable weather-resistant performance.



OUR PROJECTS

# SHANTA BEC

High-performance unitized curtain wall system featuring double-glazed Low-E glass, aluminum framing, and precision structural glazing. Designed for energy efficiency, natural daylight, and a sleek modern glass façade with enhanced thermal and weather protection.



OUR PROJECTS

# OUR SERVICES

**Swing & Fixed Window**

**Sliding & Fixing Window**

**Bifolding Door**

**Faced Curtain Wall**

**Ceiling**



# OUR SERVICES

**Glass Railing**

**Frameless Glass Door**

**Swing Door**

**ACP**

**Ceiling**



# OUR TEAM



# Accessories



Active Lock Point



Adjusting end



Aluminum transmission rod



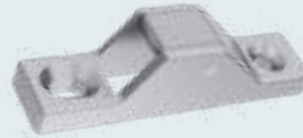
Anti-drop block



Anti-detachment device



Anti-misoperation transmitter



Anti-strike Lock catch



Anti-theft Piece



# Accessories



Automatic lock



Bolt Locking Piece



Bottom Pivot Hinge



cable spider



Canopy fittings



clamp



Concealed hinge



Concealed screen window hinge



# Accessories



Connecting rod



Corner device



Cover Plate



Crescent lock



Cylinder



Door hande



Door Handle



Door hinge



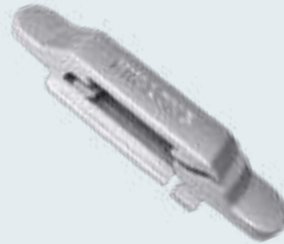
# Accessories



Door lock



Double hook lock T



Double side transmission rod



Double-pulley



Double-pulley



Double-pulley



Double-pulley



Duplicator



# Accessories



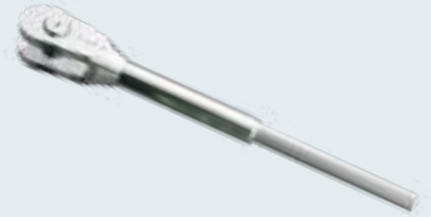
Fin spider



Fire-resistant locking piece



Fire-resistant locking plate



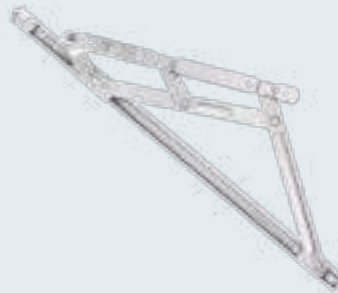
Fixed swaged anchor



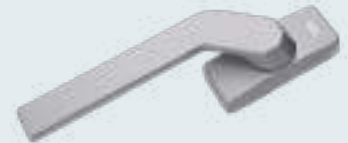
Flexible Pegstay



Four-arm spider



Friction stay



Handle



# Accessories



Handle Pivot Hinge



Hardcover roller series



Hidden window hinge



Hook End



Hopper Window Restrictor



Intermediate transmission lever



Latch Rod T



Latch



# Accessories



Left Position Block



Limiter



Locator



Lock catch



Lock Handle



Lock Hook



Lock Plate



Locking piece



# Accessories



Long single-arm spider



Look hook



Main transmission rod



Micro-ventilation transmission rod



Middle hang Hinge



Middle lock block



Multi-range flexible Pegstay



Outer open hinge



# Accessories



Pegstay



Pivot Hinge



Pulley



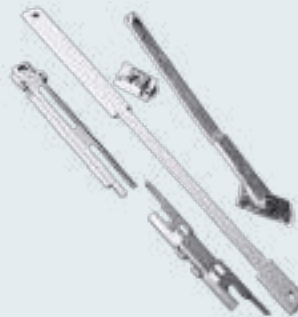
Right Position Block



Roller



Safety Lock Hook



Secondary connector rod



Shim

# Accessories



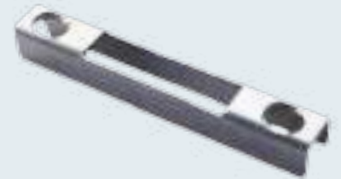
Side transmission rod



Sliding door hardware fitting



Sliding lock



Sliding lock catch



Spigot



Subsidiary Spigot

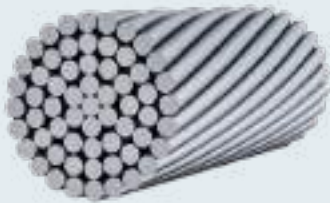


Supporting block



Supporting Rod

# Accessories



Tension cable



Three-arm spider



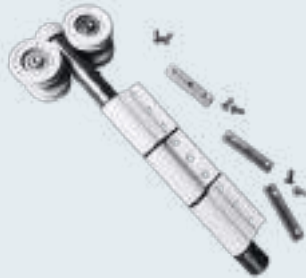
Transmitter



Trapezium Lock



Upper Cover



Upper Pivot Hinge



Upper Pivot Hinge



Waterproof cover



# TIN

  
**Government of the People's Republic of Bangladesh**  
**National Board of Revenue**  
**Taxpayer's Identification Number (TIN) Certificate**  
**TIN : 329350164262**

This is to Certify that **MIZANUR RAHMAN** is a Registered Taxpayer of National Board of Revenue under the jurisdiction of Taxes Circle-158 - Taxes Zone 90, Dhaka.

**Taxpayer's Particulars :**

- 1) Father's Name : Late Tofazzul Hossain
- 2) Mother's Name : Mainun nesa
- 4 a) Current Address : House-79, Block -F, Chairman Bari, Barani, Dhaka-1213, Barani, Dhaka, PO : 1213
- 4 b) Permanent Address : Village-Mahisdia, P.O. Dakshin Balukhanda, P.S. Nawabganj, District-Dhaka, Nawabganj, Dhaka, PO : 1326
- 5) Previous TIN : Not Applicable
- 6) Status : Individual

Date : October 04, 2016

**Please Note:**  
1) This TIN is valid only for the purpose of income tax collection and other tax collection.  
2) Failure to file the Declaration of assets and liabilities will be treated as a default under section 114 of the Income Tax Ordinance, 1986.  
3) Provision under section 114 of the Income Tax Ordinance, 1986.



**Secretary/Commissioner of Taxes**  
Taxes Circle-158  
Address: 101 Shantipur, Dhaka (Phone: 2220194)

© 2016. This is a system-generated certificate and expires on automatic operation.



# BIN

  
**Government of the People's Republic of Bangladesh**  
**National Board of Revenue**

Model 2.3

Customs, Excise and VAT Commissionerate, Dhaka (North)  
Gulshan Division

**Value Added Tax Registration Certificate**

This is to certify that the person whose details are given below is registered under  
Value Added Tax and Supplementary Duty Act, 2012 (Act No. 47 of 2012)

**BIN : 003898391-0101**

Name of the Entity	: CSG ENGINEERING
Trading Brand Name	: N/A
Old BIN	: N/A
e-TIN	: 329350104282
Address	: CSG Engineering, H - 84/9 Bir Uttam Zaver Rahman Road (HajjMahabuddin Mansion), Katol, Banani PS, Dhaka-1213, Bangladesh
Issue Date	: 10/06/2021
Effective Date	: 06/2021
Type of Ownership	: Proprietorship
Major Area of Economic Activity	: Retail/Wholesale Trading, Imports, SUPPLIER & 1ST CLASS



This is a system generated certificate and doesn't require any signature

LEADS  
TOWER



# BANK SOLVENCY



Export Import Bank of Bangladesh Limited  
Gorb-E-Nawa Branch

Ref: EXIM/GBN/GB/2021/ A/S/09  
Dated: 28/10/2021

## TO WHOM IT MAY CONCERN

This is to certify that **CIG ENGINEERING**, Address: House-849, Bir Uttam Ziaur Rahman Road, (Haji Sahabuddin Mansur), Kakeri, Barisal, District-1215, Bangladesh has been maintaining an Al-Wadiah Current Deposit Account bearing No: **06711100204243** with us. To the best of our knowledge, the Company is financially sound & solvent.

This certificate has been issued at the request of the client and without any obligation on the part of the bank or any of its officials.

We wish every success of the Client.

For & On behalf of  
Export Import Bank of Bangladesh Ltd.

**Authorized Signature**  
Vice-Chief Executive Officer  
Local Principal Office, 83/1/1/1/1  
Gorb-E-Nawa Branch, Bangladesh  
1215/1215/1215/1215



+880 1714-488205 | +880 1717-192160  
[www.cbg-engineering.com.bd](http://www.cbg-engineering.com.bd)

Showroom: 82/5 New Airport Road, Kakoli, Banani, Dhaka  
Factory: Baganbari, Borua, Khilkhet, Dhaka 1229